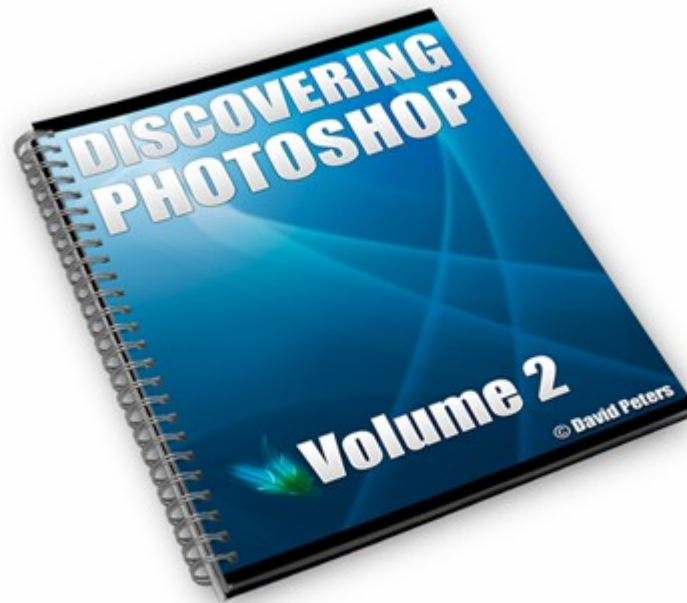
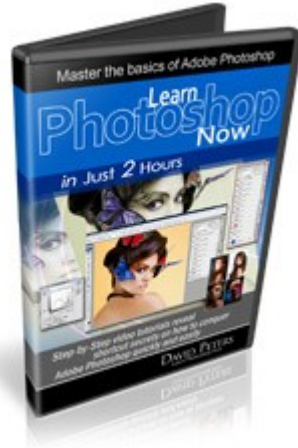


# Discovering Photoshop: Volume II



## **This Brand New Step-By-Step Video Training System Shows Anyone To Go From Complete Newbie To Confident Photoshop User In Just 2 Hours...**



[Click here to Discover this free video tutorial which shows you how to easily correct one of the most common graphic problems \(I'm sure your computer is FILLED with graphics that have this problem and are dying to know how to fix it\)...](#)

With David Peters Photoshop Video Tutorials you will learn everything you need to feel confident about using any Photoshop version as there really is not much that differentiates them. Not only that, you will have immediate access to view all of the photoshop video tutorials that will help you to dominate any Photoshop version in just a couple of hours.

"Learn Photoshop Now" will teach you all of the following tools and editing tricks:-

... Learn how to transform old photos into new looking photos with just a few simple steps - it's so simple!

... Discover how to remove red eye from photographs

... How to use all the important Photoshop Tools

... Crop and resize my photos without compromising quality

... Make my photos look their best with easy-to-use editing tools

... Easily perform more advanced retouching and enhancing thanks to the easy image-selection tools, and amazing compositing capabilities

**[Click Here to Master Photoshop In Just 2 Hours](#)  
**[- Guaranteed \(Even If You're A Total Newbie\)!](#)****

# Table of Contents

<u>Make Your Photos Look Professional with Adobe Photoshop .....</u>	<u>4</u>
<u>Choosing the Right Pictures .....</u>	<u>5</u>
<u>Cropping the Images.....</u>	<u>6</u>
<u>Blending Techniques.....</u>	<u>6</u>
<u>Bordering Your Collage.....</u>	<u>6</u>
<u>Working with Layers .....</u>	<u>6</u>
<u>What Is a Layer?.....</u>	<u>7</u>
<u>Creating a New Layer.....</u>	<u>7</u>
<u>Creating a Layer From a Selection.....</u>	<u>8</u>
<u>Renaming a Layer.....</u>	<u>9</u>
<u>Changing Layer Position.....</u>	<u>9</u>
<u>Sharing Layers Between Documents.....</u>	<u>9</u>
<u>Linking and Merging Layers .....</u>	<u>10</u>
<u>Linking Layers.....</u>	<u>10</u>
<u>What's a Merge?.....</u>	<u>11</u>
<u>Layer Effects .....</u>	<u>11</u>
<u>Drop Shadows.....</u>	<u>13</u>
<u>Layer Effect Settings .....</u>	<u>13</u>
<u>Bevel and Emboss.....</u>	<u>15</u>
<u>Powerful Layering Tools .....</u>	<u>15</u>
<u>Time For Some Fun?.....</u>	<u>16</u>
<u>Exporting Layers to Individual Files .....</u>	<u>17</u>
<u>Screen Blending Mode .....</u>	<u>18</u>
<u>How to use Photoshop to Match Colors .....</u>	<u>18</u>
<u>Creating Multicolor Gradients .....</u>	<u>19</u>
<u>Brightening Dark Shadows .....</u>	<u>19</u>
<u>Resizing Images While Keeping Resolution .....</u>	<u>20</u>
<u>Adding Watermarks to your Images .....</u>	<u>21</u>
<u>Beyond Editing, and AWAY!!! .....</u>	<u>22</u>

# Make Your Photos Look Professional with Adobe Photoshop

Have you ever wondered how professional photographers take such amazing looking photos? Do you want to take photos like the professionals do? If you answer yes to any of these questions, then the Adobe Photoshop software will be able to help you out.

First of all, Adobe Photoshop is considered to be one of the best photo editing software programs ever to hit the market. It is so good at doing its job and can provide the entire necessary photo editing tools that professional photographers from all over the world are now using this software to make their beautifully taken photos even more beautiful.



If you love to take pictures as a hobby but you can't seem to get the proper lighting or the proper angle in order to get the perfect shot, then you will see that Adobe Photoshop will be able to help you out. So, just what are the features of Adobe Photoshop that will be able to turn your pictures in one that looks professional?

Well, Adobe Photoshop has all the editing features that you will usually find in a photo laboratory. This means that you will be able to eliminate red eye, back lighted pictures, and even enhance color. You can even add effects that will be able to make a simple picture look great.

These days, you don't have to be a professional photographer to produce high quality pictures. You don't even have to learn about exposure compensation, white light balance, and even learn how to tweak an SLR camera. With a normal or ordinary digital camera, you will now be able to produce great quality photos. With Adobe Photoshop, you can correct color saturation and even make good exposure compensation.

You can even edit old yellowed photos and make them look brand new again. Also, you can add new backgrounds on the subject on your photos. For example, you can even make a picture of yourself standing behind your house in to a picture of yourself standing behind the Eiffel Tower and making it look as if it was real.

You can even cut and paste your face on to other people's body. For example, if you want a photo with you standing besides your favorite movie star, then you can do so with Adobe Photoshop. You can adjust the lighting effects of your picture in order to match it with another picture.

Another great effect is that you can convert your colored pictures in to sepia or grayscale. Back lighted pictures are a thing of the past as the Adobe Photoshop has editing features that will be able to eliminate the back lighted environment and lighten the dark areas of the picture.

Hand shake errors are also very common. With Adobe Photoshop, you will be able to correct this problem by sharpening the images with the sharpening tools in the software, such as the smart sharpen. For that misty feel, you can blur your photos with smart blur.

With practice, you will be able to remove unwanted objects in a great looking photo, like a trash can or a complete stranger doing wacky poses behind the actual subject. If you master Adobe Photoshop, you can even make money out of it.

As you can see, Adobe Photoshop can turn an ordinary looking picture in to a high quality picture with vibrant colors and great effects that looks professional. There are more things that you can do with Adobe Photoshop.

## Choosing the Right Pictures

When creating collages, you need to start off with the right images. Go through your options and choose images that focus on your subject. These are the pictures that will make up the foreground of your collage. Then look through and find images not necessarily of your subject but that compliment it well. An example would be if you were doing a collage of your daughter's first birthday, you would want several close-ups of just her and a couple that show the cake table, the gift table and maybe even balloons.



## Cropping the Images

The next step is cropping the images. This takes practice. Photoshop has some amazing tools to pick object right out of photos such as the Magnetic Lasso tool. Experiment with that and with masking. You should be able to grab a couple of good objects to combine with your background images.

## Blending Techniques

To make an eye-catching collage using Photoshop, you need to be able to use blending techniques. Layer the objects you have chosen in the Layers palette. After all the images are in position, you need to start blending them to give a complete and blended image. You can use opacity, the Brush tool, the Eraser tool, and drop shadows to get the effect you wish. Remember that dimension can add a new look to reused images.

## Bordering Your Collage

Next you will want to add something special to your collage relating to the subject matter. Create a border or photo frame to add the perfect touch.

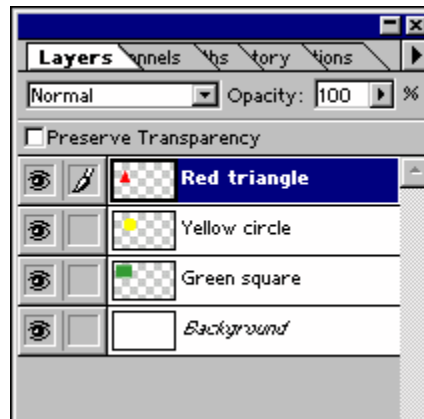
# Working with Layers

Photoshop offers very powerful layer capabilities, which can cause confusion. It is also quite common to find many who fail to use layer functions that would help to speed their work.

The basic operation of a raster program depends on a selected layer. You do not have to build multiple layers, but you do need at least one layer. Pasting an item or creating text in Photoshop automatically creates a new layer. For any other operation, you will have to manually add a layer before drawing. If you do not add a layer, the object will be drawn on the currently selected layer and drawn objects will merge together automatically.

## What Is a Layer?

The best way to understand layers is to think of each layer as a sheet of acetate, as used for overhead projectors. Picture a clear page, with parts of the page information on each page. In the sample at the left, note which object is in front of the next and then note the stacking order as represented in the exploded layers representation. The Photoshop Layers palette for this design is shown below.



It is best to place every new element, or addition to an element, on its own layer. You can always merge (combine) layers, and it is much safer and faster to build each element a layer at a time. Once you are satisfied with the look, you can then combine the elements that make up that object. As an example: If you wish to make a square with an outline, build your square first, and then add your outline on a new layer. As long as the layers are separate, you can easily change either the fill or the stroke color, and the stroke width.

Building in layers will seem awkward in the beginning, since it is easy to gather a significant number of layers. Soon though, you will develop an instinct for when to combine and link layers to make the layers palette less cumbersome. Next we will focus on the specifics of layers in Photoshop.

## Creating a New Layer

There are several ways to create a new layer. Select Layer>New>Layer from the Main Menu or use SHIFT+CTRL (Command) + L. I find I most often use the Layers palette for layers operations. With the Layer tab active, click on the side arrow to activate the pop out menu. Click on New Layer. The New Layer window will appear. I advise that you type in a name for your layer, since working with even a few layers will become confusing. Choose a name that you will be able to identify, even if you return to the document months later.

Click OK and your new layer will appear immediately above the layer that was selected when you created the new layer.

You can also duplicate a layer, which will copy the selected area and create a new layer to place the copy. Select the layer you wish to copy. Activate the side pop out menu and choose Duplicate Layer. Windows users can also right click on a layer and choose Duplicate Layer from the flyout menu. You will be presented with the Layers Option window, and can rename the copied layer from the Photoshop default, which is the name of the current layer with "copy" added.

When the copy is created, it is placed immediately on top of the original layer, which makes it seem as if nothing has happened. Use the Move tool to move the layer and you will see the new layer as well as the original layer.

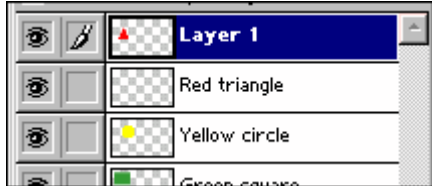
## **Creating a Layer From a Selection**

You may wish to copy only a portion of a layer, or perhaps you would prefer that one area of a layer was on its own layer. You can copy or cut any selection to a new layer easily. Activate the layer (click on it) that contains the information you wish to duplicate or move to a new layer and select the area you would like to work with. Choose Layer>New>Layer via Copy or Layer via Cut from the main menu. For a quicker method, right click (Windows) or Command click (Mac) on the layer containing the selected area, and choose the Layer via Copy or Layer via Cut from the flyout menu. The selected area will be duplicated to a new layer if you chose to copy, or moved if you chose the cut option.

I often use the layer via copy or duplicate layer functions when creating navigation elements. Careful naming as you create repeating elements is essential for efficient production.

## Renaming a Layer

If you do not name a layer as you create it, or if you are not presented with the choice to assign a name to a layer, you can easily rename any layer. Double click on the layer in the Layers palette and type a new name into the Name area of the Layer Options window. This window is also available through a right click (Command click) or the side flyout menu.



## Changing Layer Position

Solid areas in layers will hide the layers below in the stacking order. Quite often, you will find that you need to change the order of the layers. This is a very simple procedure in Photoshop. Simply click and drag the layer to the position you desire. As you are dragging, a clenched hand will appear. Release the mouse when the layer is in the position you require.

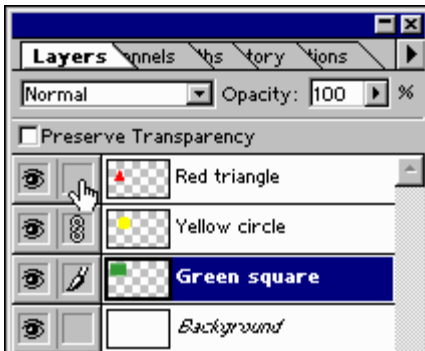
## Sharing Layers Between Documents

You can also drag a layer from one Photoshop document to another. Have both documents open – the one containing the layer you wish to copy, and the document that will receive the layer. Click and drag the layer from the original document to the document where you would like to add the layer. The layer will appear in the new document exactly as it was in the original document, but it will also remain in the original location.

# Linking and Merging Layers

## Linking Layers

Suppose you have followed my advice, and have created layers for each step your drawing.



Now you have an object with a fill, an outline and text. You would like to move this object over a few pixels. The only smart move is to merge the layers so that all will move as one unit.

That is one solution, but it is not the only one, nor is it probably the best one. You can link layers so that they are seen as one unit, but you can still separate them whenever you wish to make a change.

To link, simply select the main layer (any layer will do, but it is easier all around if you use a layer that makes sense as the "main" one in the link group.) Click on the second column from the left (as shown by the finger pointing cursor in this sample) to create a link. The chain symbol appears to indicate that this layer is linked to the active layer, and will appear any time the main layer in the link group is active. Repeat for any layer you would like to have as part of this group.

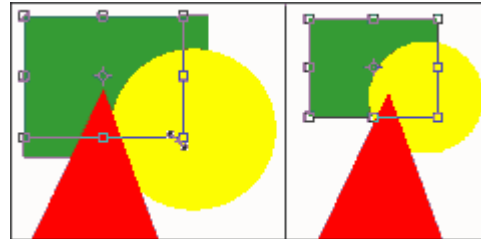
To unlink any layer, simply click in the link area on the Layers palette again.

Linked layers can be moved and transformed as if they were one layer.

You can fill selected areas on each layer independently, and even delete one layer in a link group. (Note: If you change your mind, and use the undo feature, the link will not be restored and you will have to link the layers again.)

## What's a Merge?

Merging layers creates one layer from two or more layers. Once layers are merged, they cannot be separated into the original layers, so be careful with this command. If you are certain you will not need the layers separate again, position the layer you wish to merge above the layer you wish to combine it with in the Layers palette. Click on the flyout menu and choose Merge Down. The layers will be combined with the name of the lower layer remaining.



If you have linked layers that you do not require to be separate, choose Merge Linked Layers from the flyout menu.

You can also merge all your layers together by choosing Flatten Image from the flyout menu.

Please make sure that you will not require the layers separate before merging. I will often link layers for a while before I make the decision to merge. This allows a trial period before committing to the merge. Why bother with merging at all if separate layers are so much better? It is not hard to build an image with 20-50, or more layers. Scrolling through the list or CTRL clicking an object to select a layer can become time consuming on a complicated image. If you are certain that several layers may be safely merged, it is best to simplify your work.

## Layer Effects

Before we begin working with layer effects, I want to make sure that you know one of the best time saving tips for working with layers. I find the Auto Select Layer option for the Move tool cumbersome. But you can have quick selecting on demand. With your Move tool active (V), **you can activate a layer by CTRL (Command) clicking on an object in the document.** The layer that contains that object will be highlighted. Occasionally, especially with small text, it may be hard to find the right spot to click, so confirm that the correct

layer is active. However, for most work in Photoshop, this one little tip will save you hours and allows you to work primarily in your document, not constantly moving from the document to the Layers palette.

Now that we have done the work, let's have some fun. Photoshop layer effects provide an easy way to add dimension and interest to your images. I am not going to focus on the wild things you can do with effects, but rather the basic process and how you can speed your work. Still, it is rewarding to watch an object pop right out with a well-placed shadow, or see a plain line turn into a 3D tube before your eyes.

Layer effects are added to individual layers. Every item on the layer will receive the effect. Objects must be on a layer with a transparent background, however. If you look at the example below, the "Gray bar" layer is the first one above the white background. Although it appears in the document just as the colored objects, you can see the difference in the Layers palette thumbnails. Note how the white surrounds the gray bar.

If a drop shadow was added to this layer, the shadow would appear around the white portion, not the gray. On the colored layers, the shadow will appear for each object, since the layer background is transparent, as shown by the checkered background.

The same drop shadow was added to all layers of this sample at the left with the following results.



Note that the gray bar layer shadow follows the white background edge, not the bar. When it appears that your effect is not working, make sure that your layer background is transparent.

**Note:** You cannot apply layer effects to a background layer. However, if you duplicate the background layer, it becomes a standard layer to which you can add effects.

## Drop Shadows

I suspect that the drop shadow is by far the most common layer effect applied in Photoshop. I would like to take a little side trip to talk about shadows, since many people simply accept the default settings. Although you can create an acceptable shadow this way, I find I make minor adjustments to the basic settings with almost every image. Changing just a few numbers can make a huge difference to your results. A shadow is usually intended to add depth to your design, and the best examples do not detract from the object.

Drop shadow adjustments become more than just an appearance issue when we are talking about text. I have seen many examples of text that is much harder to read because a shadow has been added – in extreme cases, it is virtually illegible.

Drop shadows can make  
text very difficult to  
read.

Drop shadows can make  
text very difficult to  
read.

## Layer Effect Settings

The layers effect window offers a menu for each effect available, and they are all similar. To activate the effects menu, right click (Command click) on the layer you wish to add the effect to, and choose Effects. You can also choose Layer>Effects and then the effect you wish to add from the main menu. The Effects window will open.

You can choose the effect you wish to add from the drop-down menu at the top of the window. The Apply option must be active for that effect to be applied to your layer. You can add more than one effect on the same visit to the Effects window.

The Mode drop-down box offers the same options that are available throughout Photoshop – usually the default setting is the best for this setting, but experiment with other settings for

unique effects. You can also change the color that is used to create each effect by simply clicking on the color well and choosing another color. I rarely use a colored shadow (though I have seen them used effectively), but I quite often use a shade of gray to reach the effect I desire.

The opacity is the one setting I always adjust on drop shadows. I find that a setting between 35% and 60% usually allows for a shadow that shows well, yet does not overpower the object.

The Global angle is a terrific setting. Shadows and other dimensional effects are intended to represent the effect of light on an object. Obviously, the light source angle is constant in a static image. The global angle setting provides a light direction that carries across the entire image.

The sample below is constructed of three layers. In the top sample, the default setting of  $120^\circ$  is used. One click changed the angle through the image to  $-48^\circ$ . To adjust the angle, simply click on the angle flyout and click where you would like the new light source to be, or click and drag to your desired setting. If you know the angle you wish to use, you can also type the value. With the Use Global Angle option checked, this adjustment will change the angle across the entire image.



Occasionally, you may wish to have the a unique angle on one layer (be careful with this though). Uncheck the Use Global Angle option, and you can change the setting for the active layer without affecting other layers.

The distance, blur and intensity settings create the effect that the object is rising above the page. A low distance value will make the object appear to be quite close to the page, while a high setting provides the illusion that the object is floating well above the page. A closer

setting is often better for text. The blur setting provides control over the amount of feathering in the shadow edges. I often find that I reduce the distance and increase the feathering in drop shadows.

## Bevel and Emboss

The bevel and emboss feature in Photoshop is powerful, but again a setting where the default values usually do not deliver the best results. In the sample at the left, the top row of buttons uses default values with an Inner Bevel. The lower sample is exactly the same, but has had the distance and blur reduced, with the shadow color changed from black to dark gray.

Experiment with settings by checking the preview option on the Effects window. You can watch the changes as you apply new values. It takes a little extra time in the beginning, but you will soon find that your instincts will lead you quickly to the correct settings.

## Powerful Layering Tools

So ... now I have you adjusting the values almost every time you apply an effect. How on earth can you keep consistency across your image? That's easy! Photoshop offers the option to copy your effects from layer to layer.

When you have added effects to a layer, a symbol appears on your layer as shown at the left, highlighted with a yellow circle. Double clicking on this symbol opens the Effects window. Right clicking (Command click) will bring a valuable new menu to your fingertips. We will use this menu to provide consistency and speed to your work. **Note:** You can reach the same menu by choosing Layer>Effects in the main menu.

When you have the effects on one layer perfected, you can copy the effects to move to another layer. Simply open the effects editing drop-down as explained above, and choose Copy Effects. Activate the layer you would like to have the same effects applied to, open the drop-down menu and choose Paste effects. Yup, that's it. As long as you do not copy effects again, that setting will stay on the clipboard waiting for you to apply it to layer after layer. You can also paste the effect into a layer in a separate document.

Now for real power, what if you could apply an effect across linked layers? You can! Create your linked layers as described a few days ago in linking and merging. Activate the layer that others are linked to, open the effects drop-down menu and choose Paste Effects to Linked. That's it - you could apply an effect to 25 layers (or many more) at once as long as they were linked.

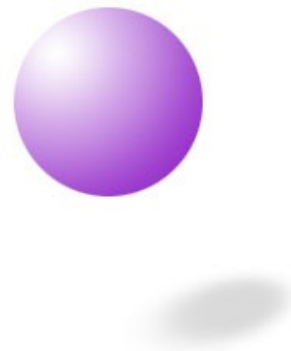
In the sample of the rectangles at the left, I decided to reduce the size of all the boxes. Linking them let me reduce the rectangles across the layers in one step. With the reduced size, the shadow was blurred too much. I corrected one of the layers, then copied and pasted the effects to the linked layers. Very powerful tools.



## Time For Some Fun?

Let's take the layer effects' power and have some fun with it. You can separate the layer effect from the layer and manipulate it with all the power that Photoshop offers.

The image shown to the right started as a ball with a layer effect shadow. I separated the effects to a separate layer, and using the transform commands, manipulated the shadow to make the ball appear to be floating well above the surface.



The first step here was to create the ball and then apply a shadow effect. I used the darkest Web-safe gray as the shadow color, a distance of 150 and blur value of 30. Not very realistic though.

Right click (Command click) on the effects symbol to activate the drop-down menu, and a powerful option is presented. Choose Create Layer, and the layer effect will be moved to a separate layer, as shown below.



You can now manipulate the shadow in the same way as any other layer. In fact, you can apply an effect to the effect if that will achieve the results you seek. Add texture, noise, scale, rotate, skew ... whatever you wish, since it is a normal layer. It is wise to link the shadow layer to the object once you have achieved the right look.

This is how you can achieve perspective shadows on objects, making them appear to be standing up, or floating in the air. Experiment with the transform tools on a shadow layer and see what you can produce. You may have to play a while, but always keep light in mind. Where would the light be coming from, and what effect would that have? Place objects near a light source and observe the effects of the shadows.

We have the tool to create any three dimensional effect with effects layers, and you owe it to yourself to learn how to bring the dimension into your work.

Work with layers until you can accomplish all basic functions without thinking. Without understanding layers perfectly, you will not ever be able to master the power of Photoshop, and will find it difficult to create professional, highly editable images.

Finally, always, and I mean always, always, always – as in don't **EVER** forget – save a Photoshop format (PSD) copy of your files with layers intact. Even if you never work on that image again, you can use elements of it by dragging layers or copying effects.

## Exporting Layers to Individual Files

Occasionally, you'll come across or create a Photoshop file that has several layers. You can

extract a single layer or many layers to use as individual images.

To export layers to files, open the Photoshop file that has images on different layers that you'd like as individual files. Choose File>Scripts>Export Layers to Files.

In the Export Layers To Files dialog box that appears, enter a name in the File Name Prefix text box. This name will be the prefix for each of the files.

Click the Run button, and each layer will be exported as an individual file.

## Screen Blending Mode

Photoshop has many different ways of blending layers. Different blending modes determine how the pixels on one layer effect the pixels on other layers beneath it. The Screen blending mode is available with all the other blending modes on the layers window. Screen blending mode brightens the underlying layers depending on how bright the screened layer's pixels are. If the screened pixel is black, it will look completely transparent. A white pixel will be white. A screened black layer can be used to add lens flares and other bright things to a picture with the option to remove, filter or fade them.

# How to use Photoshop to Match Colors

The Match Color command is not used a lot. If used right though, it can create some spectacular images. The command makes Photoshop evaluate and match the contrast and color of one picture. It then can be applied to another picture to create a great artistic effect. It is also useful for producing the illusion of consistency in a series of photographs in terms of lighting and color. There are as many uses of this function as you can think of as with Photoshop the possibilities truly as endless.



You'll have to tweak this effect to make the image look just how you want it to, but experiment and you'll be surprised by what this command can do. Adobe states that the tool is perfect, but in my experience you will have to adjust it to get the best effect.

## Creating Multicolor Gradients

If you want to create a cool multicolor gradient without much time spent, follow these steps.



- Create a high quality grayscale image.
- Use the gradient tool from darker to lighter (or vice versa) — either linear or radial.
- After applying the gradient, change color mode to Indexed color (select it from the Mode menu) — but not less than 8-bit.
- Then select any color table you want by choosing ColorTable option in the Mode menu. Good results can be achieved by choosing always-present-in-Photoshop Black Body (instant German flag gradient) or Spectrum color (instant lame effect) tables.

## Brightening Dark Shadows

To brighten up those dark shadows in your photograph all you do is go to IMAGE > ADJUSTMENTS > SHADOW/HIGHLIGHT and move the top slider to the right.

Hint: reset the defaults to have the amount at 0 each time you call up this adjustment.

# Resizing Images While Keeping Resolution

When you resize a large, sharp photo to a smaller size you may find that the new image has lost its sharpness. This is a common problem with changing the size of large, clear images. The blurry look can detract from the quality of the image.

Fortunately Adobe Photoshop has the ability to fix this issue with its advanced editing tools.

This method will only work in Photoshop CS and CS2. These versions are more powerful in a lot of ways, so if you don't have them I'd recommend that you invest in a copy as you may find that you will need the more advanced features.

To reduce the size of an image go to Image > Image Size. Select Resample Image and then select Bicubic Sharper from the menu. This is the optimal setting for reducing the blurring of the image when you resize it. Here is an image of an eye that was originally 1800 pixels across.



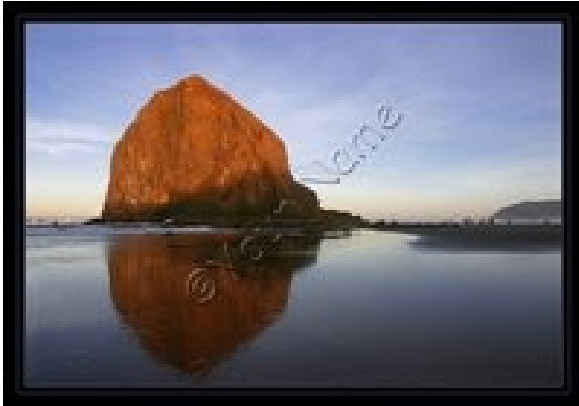
I reduced it to 250, and then further to 125 with minimal loss of sharpness. If you want to enlarge a photograph without losing too much resolution select the Bicubic Smoother.

This method is extremely effective in keeping the sharpness of the image. You can set this as the default to make things easy for you by going to Preferences > General where you will see Image Interpolation. Select Bicubic Sharper as the default choice and it will be set as the default from now on.

Remember that performing more than one resize on an image will give it more blur. To experiment with the size that you want, use a duplicate image as multiple resizing will ruin the original image. Once you've found the size you want, you can apply the dimensions to the original image

# Adding Watermarks to your Images

Protect your online images from theft. Adding a watermark to your image may not stop theft but it is a definite deterrent.



There are many creative ways of adding a watermark. Add style to your design by using your imagination. Add your name to the subject shirt, write your name in the clouds, put your company on the side of a vehicle. Use your imagination when placing the watermark.

Open the image you wish to watermark and select the TEXT tool. Click where you want to place the text and select whichever font, color and size you deem appropriate.

After entering the text, click the arrow on the top of your screen or hit enter and the text will appear on your image.

The text may be blocking part of your picture and ruining the effect you were going for so we need to soften the text to blend it in to the image. Highlight the text again and go to LAYER – LAYER STYLE – BLENDING OPTIONS and click.

A new option menu will appear. Get creative but you need to at least change the opacity bars to the left. As you do so, you will see the text start to fade into the background. This isn't a foolproof option but every little bit helps!

## Beyond Editing, and AWAY!!!

Adobe Photoshop today has gone beyond image editing. Today, the software is labeled as an image manipulation tool. This somehow gives people the impression that Adobe Photoshop actually gives them a greater degree of freedom than other image-editing programs available today.



In fact, it actually does. If sight is reality, then Adobe Photoshop can help you create any reality that you want. With Adobe Photoshop, you will be able to create images of other worlds. You will be able to capture the beauty of the universe inside a glass jar.

Your creativity will be unleashed. That's how much Adobe Photoshop can change your life. In the world today, one can easily observe the impact that Adobe Photoshop has wrought on culture. Just like Google, Adobe Photoshop is now being used by people as a verb.

When a person is said to be photoshopping something, it is always assumed that the person is editing an image of some sort, whether he or she is actually using Adobe Photoshop or not.

# Master Adobe Photoshop In Just 2 Hours With Breakthrough, Online Video Tutorials - Guaranteed (Even If You're A Total Newbie)!

This brand new step-by-step video training system shows anyone how to go from complete newbie to confident Adobe Photoshop user in just 2 hours...

[Click Here To Receive A FREE Sample Video and PDF Guide Full of Tips and Tricks Compliments of:](#)  
[www.PhotoshopRevealed.com](http://www.PhotoshopRevealed.com)

